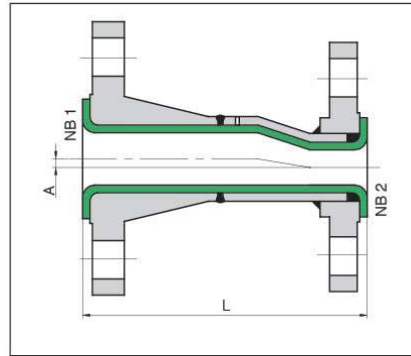
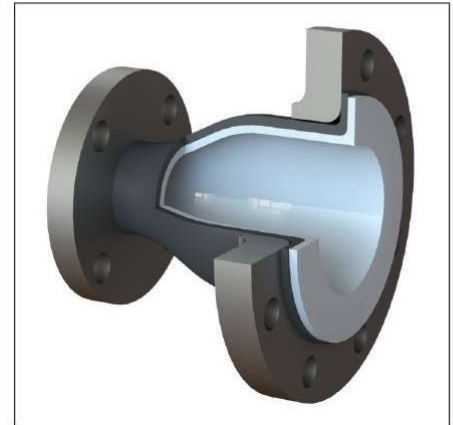


Concentric Red, FF/LF



Eccentric Red, FF/LF

NB1 # 150	NB2 # 150	L mm	A mm	Wt Kg
1"	1/2"	114	3.4	1.6
	3/4"	114	3.4	1.8
1 1/2"	1/2"	114	10	2.3
	3/4"	114	10	2.5
	1"	114	7.0	2.9
2"	3/4"	127	4.6	3.5
	1"	127	13	3.9
	1 1/2"	127	5.7	4.6
3"	1 1/2"	152	20	7.2
	2"	152	14	8.2
4"	1 1/2"	178	32	9.5
	2"	178	26	10.5
	3"	178	13	13.1
6"	3"	229	40	17.6
	4"	229	26	19.9
8"	4"	279	52	28.5
	6"	279	25	32.6
10"	4"	305	76	35.7
	6"	305	52	40.0
	8"	305	27	47.6
12"	6"	356	75	53.1
	8"	356	51	61.2
	10"	356	26	67.7



STEEL	SIZE	MATERIAL	STANDARDS	NOTE
CON & ECC RED	1" - 12"	Carbon Steel	A234 Gr WPB, ANSI B16.9	Fixed / Loose Flgs

Stainless steel / other material on request.